

# Schedule 3

## Item 1 Description of Agreement Area

### A. External boundary description

The agreement area covers all the land and waters within:

- Lot 5328 on CP PH1749 (Burnham Pastoral Development Holding);
- Lot 13 on SP223510 (Chatsworth Pastoral Development Holding); and
- that part of Lot 16 on CP CW62 (Stanbroke Pastoral Holding) east of Wills Creek.

The agreement does not cover any land and waters not under claim by native title determination application QUD189/2010 - Yulluna People (QC2010/001) as accepted for registration on 16 July 2013.

#### Note

##### Data Reference and source

- Agreement boundary data compiled by National Native Title Tribunal based on data sourced from Department of Natural Resources and Mines Qld (August 2013).
- Cadastre data sourced from Department of Natural Resources and Mines Qld (August 2013).
- Rivers / Creeks based on cadastral data where possible, else 1:250k vector data © Commonwealth of Australia sourced from Geoscience Australia (2003).

##### Reference datum

Geographical coordinates have been provided by the NNTT Geospatial Services and are referenced to the Geocentric Datum of Australia 1994 (GDA94), in decimal degrees and are based on the spatial reference data acquired from the various custodians at the time

##### Use of Coordinates

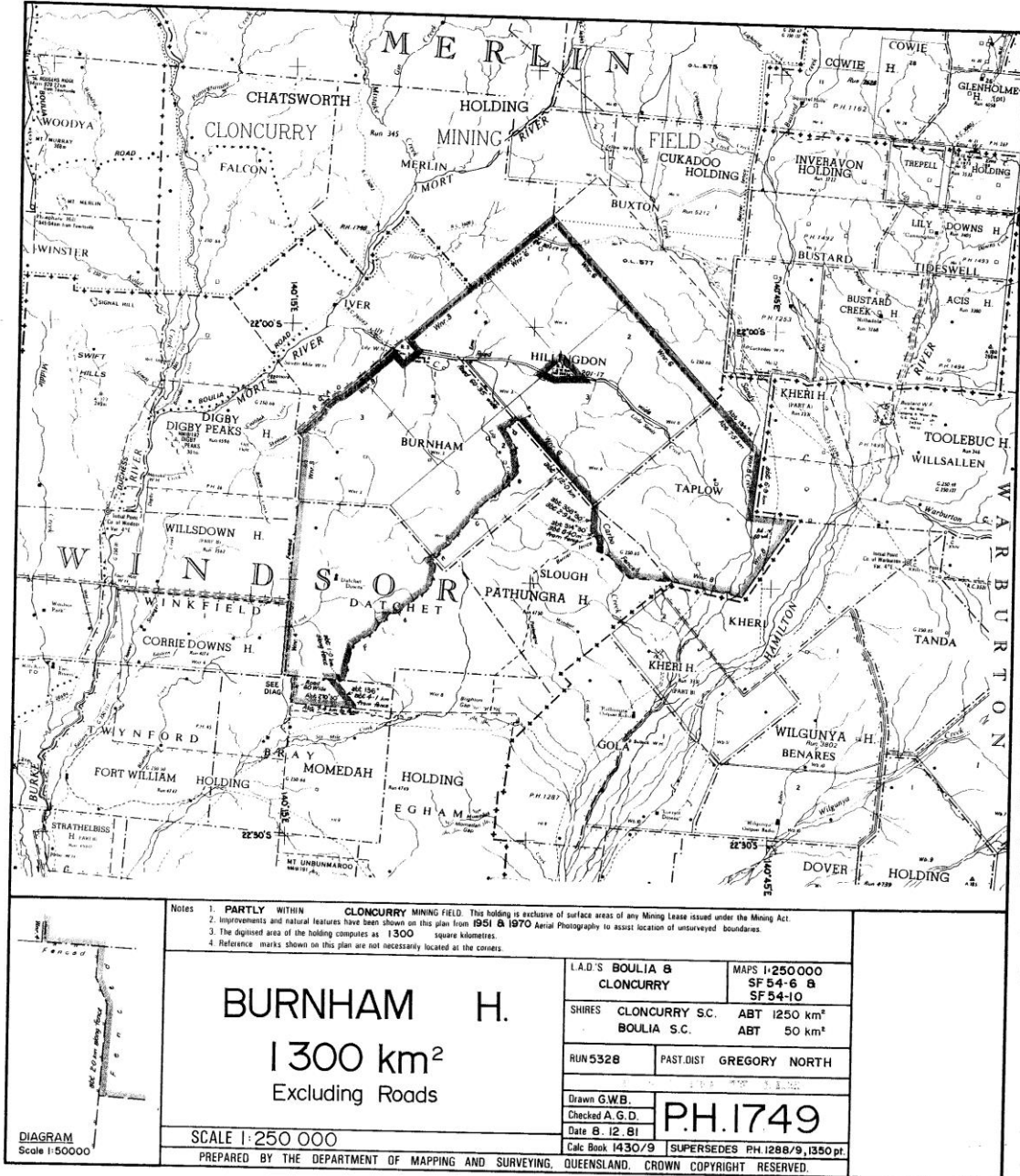
Where coordinates are used within the description to represent cadastral or topographical boundaries or the intersection with such, they are intended as a guide only. As an outcome to the custodians of cadastral and topographic data continuously recalculating the geographic position of their data based on improved survey and data maintenance procedures, it is not possible to accurately define such a position other than by detailed ground survey.

**B. Map**

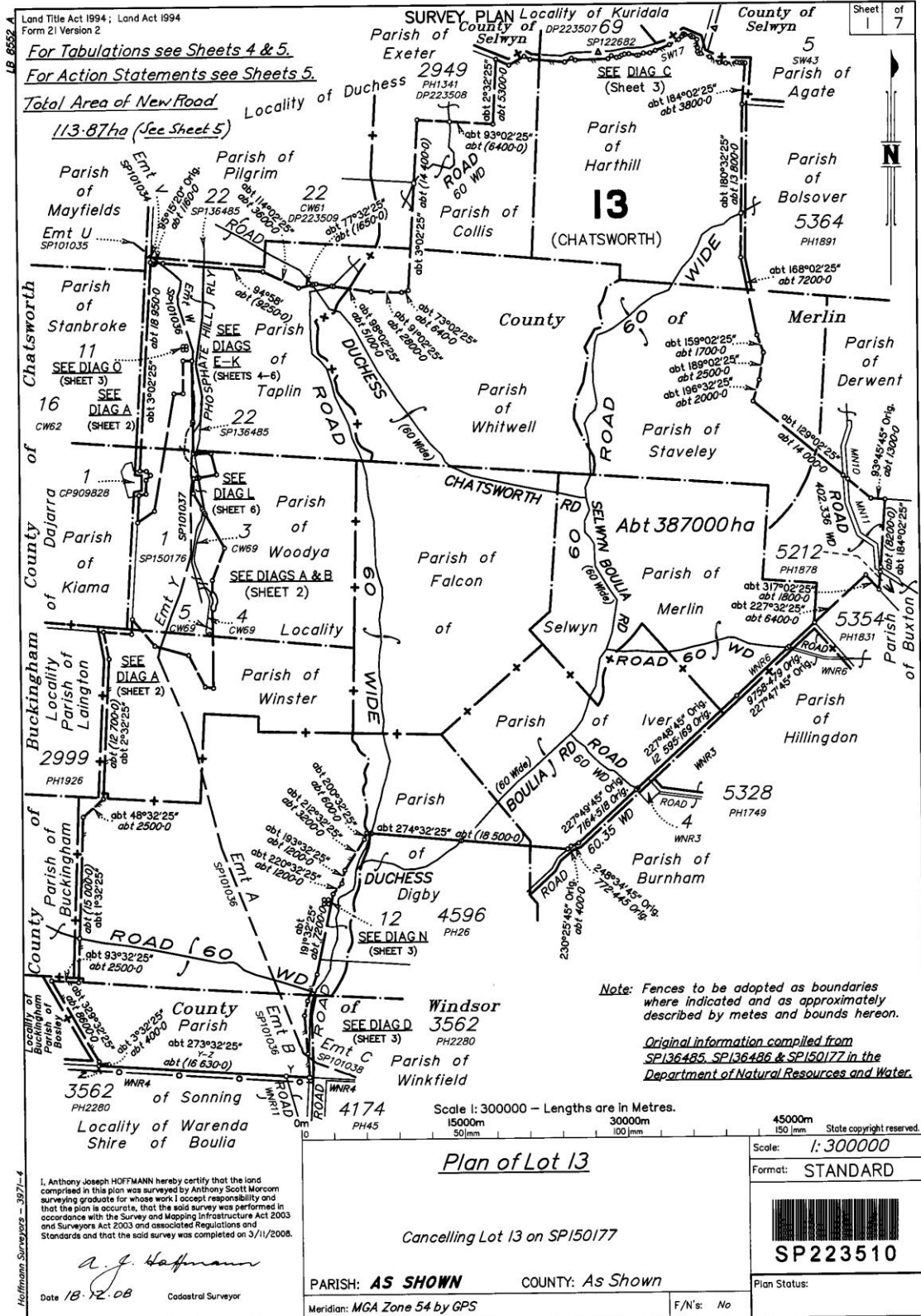
PH1749 V0 Page 1 of 1 Not To Scale

1749

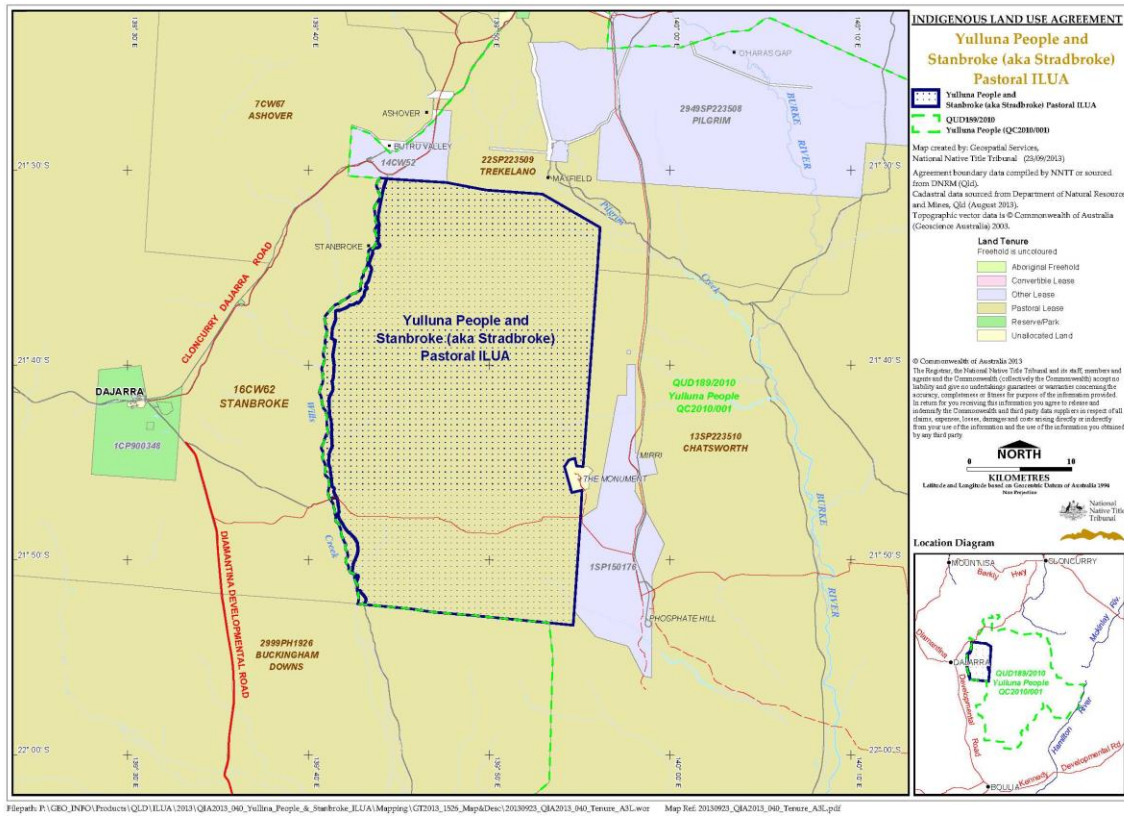
1749



Copyright protects the plan/s being ordered by you. Unauthorised reproduction or amendments are not permitted.



Copyright protects the plan/s being ordered by you. Unauthorised reproduction or amendments are not permitted.



**Item 2 Description of Lease**

Pastoral Development Holding 4/5328 comprising Lot 5328 on CP PH1749 commonly known as Burnham (aka Chatsworth)

Pastoral Development Holding 13/345 comprising Lot 13 on SP223510 commonly known as Chatsworth

Pastoral Holding 13/5398 comprising Lot 16 on CP CW62 commonly known as Stanbroke (aka Stradbroke)

**Item 3 Description of Lessee**

MDH PTY LTD ACN 010 114 488